

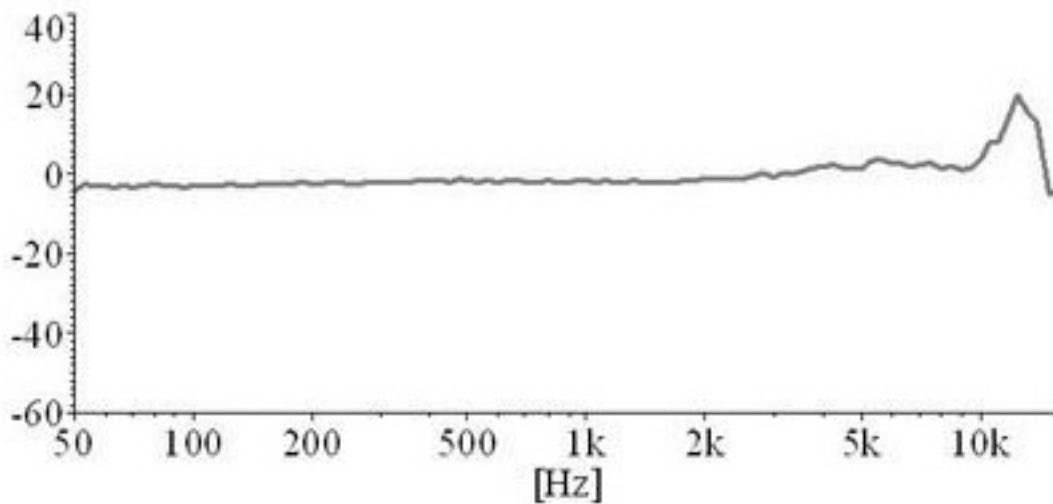


RC6038TD423C3

Electrical Specifications

Diameter	(mm)	6.15
Height	(mm)	1.45
Sensitivity	(dB)	- 42 ± 3
Power Supply	(Vs)	2.2
Resistance Loading	(RL)	2.2K
Operating Voltage	(V)	1.5 ~ 3.6
Max Rated Current	(mA)	0.15
Voltage Deduction Characteristic		Within 3 dB at 2 V
S/N Ratio	(dB)	> 57
Frequency Range	(Hz)	100 ~ 16000

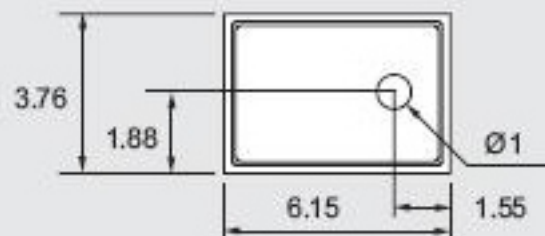
Frequency Response



Dimensions

- dimensions

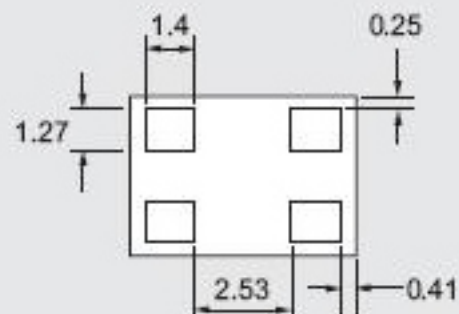
Top View



Side View



Bottom View



all dimensions are in mm